

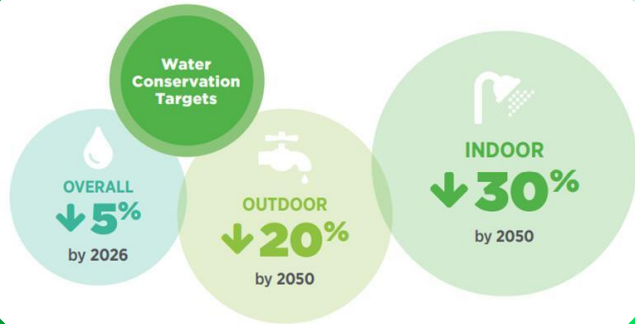


greener
TOGETHER

Advancing Water Conservation and Preparing for Climate Challenges in Saskatoon

ClimateWest Forum 2025

Water Conservation Strategy



SUSTAINABILITY STRATEGIES

- Climate Action Plan
 - Low Emissions Community Plan
 - Local Actions Adaptation Strategy
 - Community Adaptation Strategy (in development)
 - Water Conservation Strategy
- Green Infrastructure Strategy
 - Pathways for an Integrated Green Network Implementation Plan



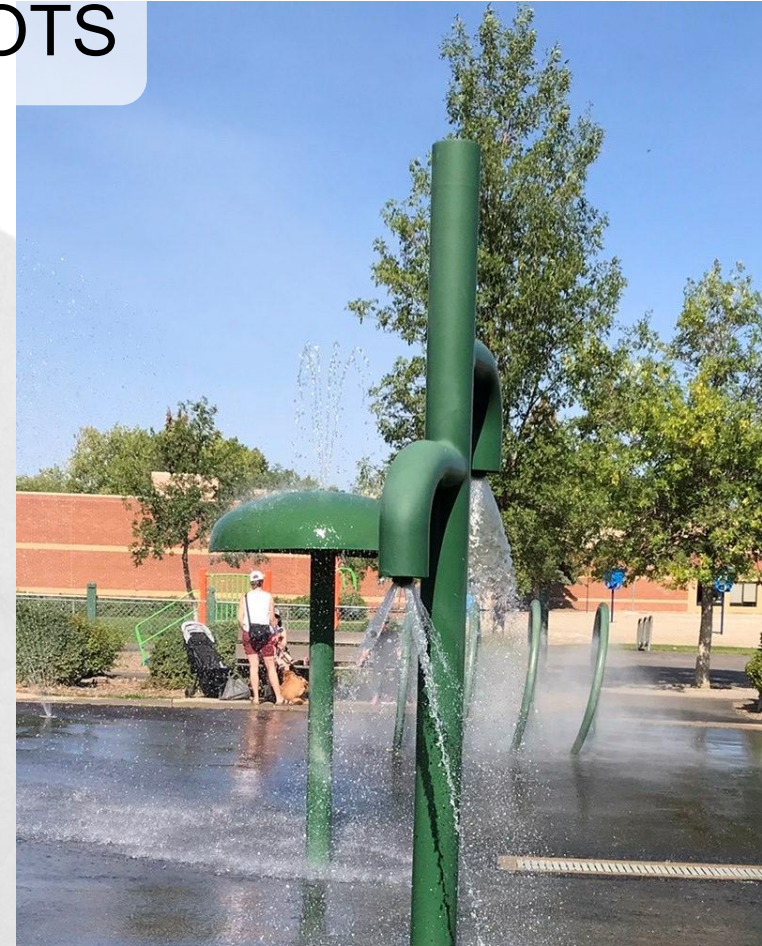
SPRAY PAD IMPROVEMENT PILOTS

Goals:

- Reduce City's water use by 20-60%
- Maintain 100% of the fun
- Improve park infrastructure & respond to changing climate
- Support the community during extreme heat events

Results:

- 2023 - 24% water reduction, 6.4M litres, \$24,000 saved, 2.7 tonnes CO2e avoided
- 2024 – 41% water reduction, 17.9M litres, \$52,000 saved, 7.7 tonnes CO2e avoided
- No noticeable change to experience



SPRAY PAD IMPROVEMENTS



Spray Pad and Paddling Pool Locations - Summer 2024

Legend:

- Paddling Pool (Blue circle)
- Spray Pad (Black triangle)
- Weekday Play Program (Green square)
- Weekday/Weekend Play Program (Orange square)

Neighborhoods and Locations:

- Hampton Village (Green square)
- Dundonald (Green square)
- Westview (Orange square)
- Kensington (Black triangle)
- Pacific Heights (Blue circle)
- Confederation Park (Blue circle)
- Blairmore Urban Centre (Blue circle)
- Parkridge (Black triangle)
- Fairhaven (Blue circle)
- Aggro Industrial (Orange square)
- South West Development Area (Orange square)
- Montgomery Place (Blue circle)
- South West Industrial (Blue circle)
- Gordie Howe Management Area (Blue circle)
- SaskPower Management Area (Blue circle)
- Diefenbaker Management Area (Blue circle)
- South Development Area (Blue circle)
- Exhibition (Black triangle)
- Avalon (Orange square)
- Stonebridge (Black triangle)
- Hudson Bay Industrial (Blue circle)
- North Industrial (Green square)
- Lawson Heights Urban Centre (Green square)
- Lawson Heights (Blue circle)
- River Heights (Green square)
- Richmond Heights (Orange square)
- North Park (Orange square)
- Central Industrial (Orange square)
- City Park (Black triangle)
- U of S Lands North Management Area (Orange square)
- U of S Lands Management Area (Orange square)
- Sutherland (Orange square)
- Forest Grove (Green square)
- Erindale (Black triangle)
- Willowgrove (Black triangle)
- Arbor Creek (Black triangle)
- Brighton (Black triangle)
- College Park East (Blue circle)
- College Park (Orange square)
- Wildwood (Blue circle)
- Brevoort Park (Green square)
- Holliston (Black triangle)
- Nutana Urban Centre (Blue circle)
- Eastview (Blue circle)
- Lakeview (Blue circle)
- Lakeridge (Black triangle)
- Lakewood Urban Centre (Black triangle)
- Rosewood (Black triangle)
- Briarwood (Black triangle)
- Hillcrest Management Area (Black triangle)
- University Heights Development Area (Green square)
- University Heights Urban Centre (Black triangle)
- Evergreen (Green square)
- Silverspring (Green square)
- U of S Lands East Management Area (Black triangle)
- Holmwood Development Area (Black triangle)

City of Saskatoon Planning and Development

May 17, 2024

N:\Planning\MAPPING\Requests\Internal\Recreation & Sport\Summer Programs 2024\Summer 2024.mxd

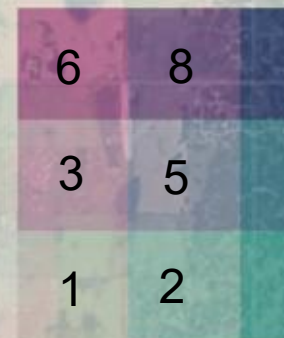
economic criteria?

Layer to display

Median Income

Legend

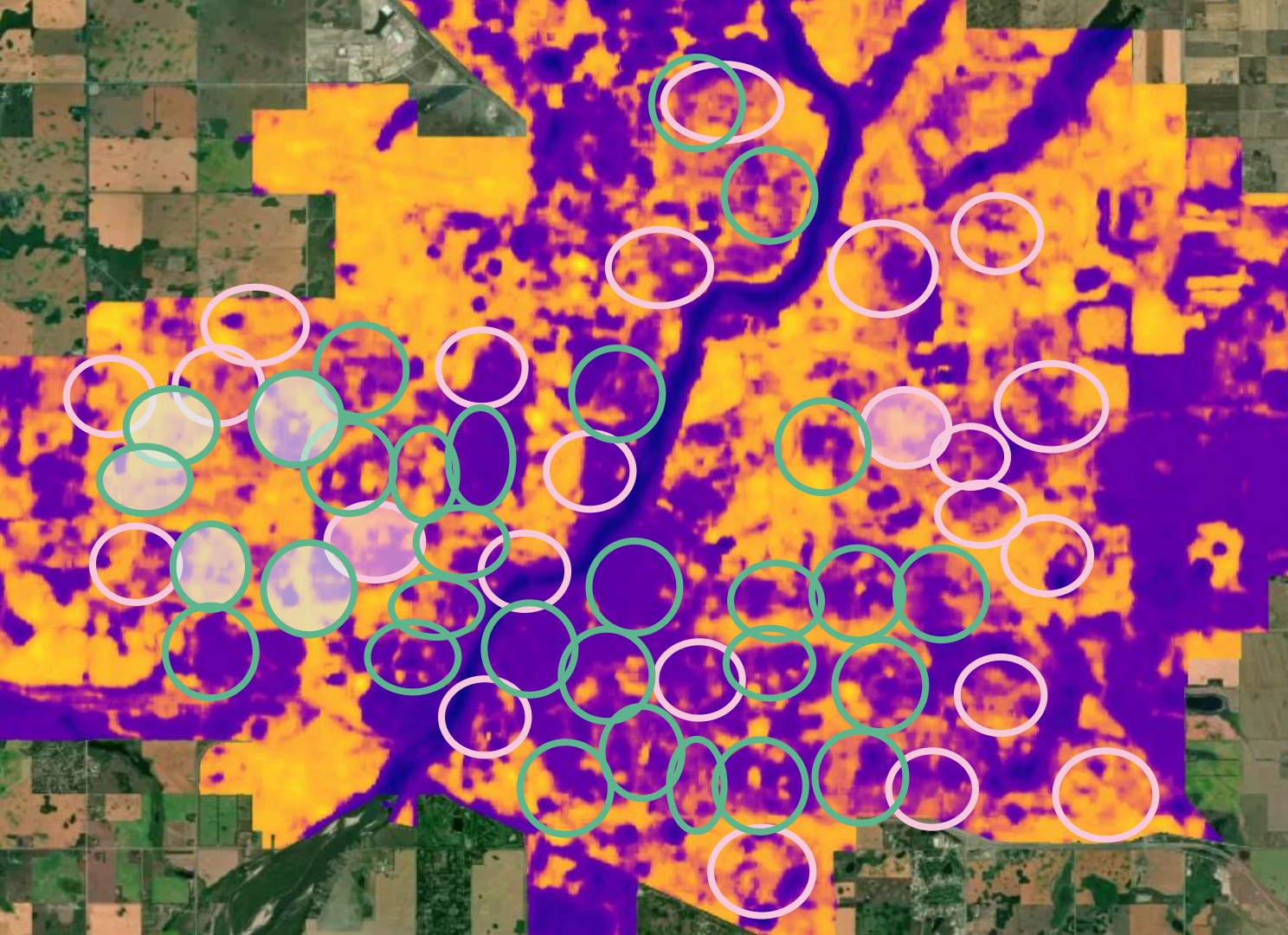
Median Income ↑



Total benef. ES -

This layer relates the ecol
the median household income
census districts.

More info





Thank You!

Stay In Touch

waterconservation@saskatoon.ca