



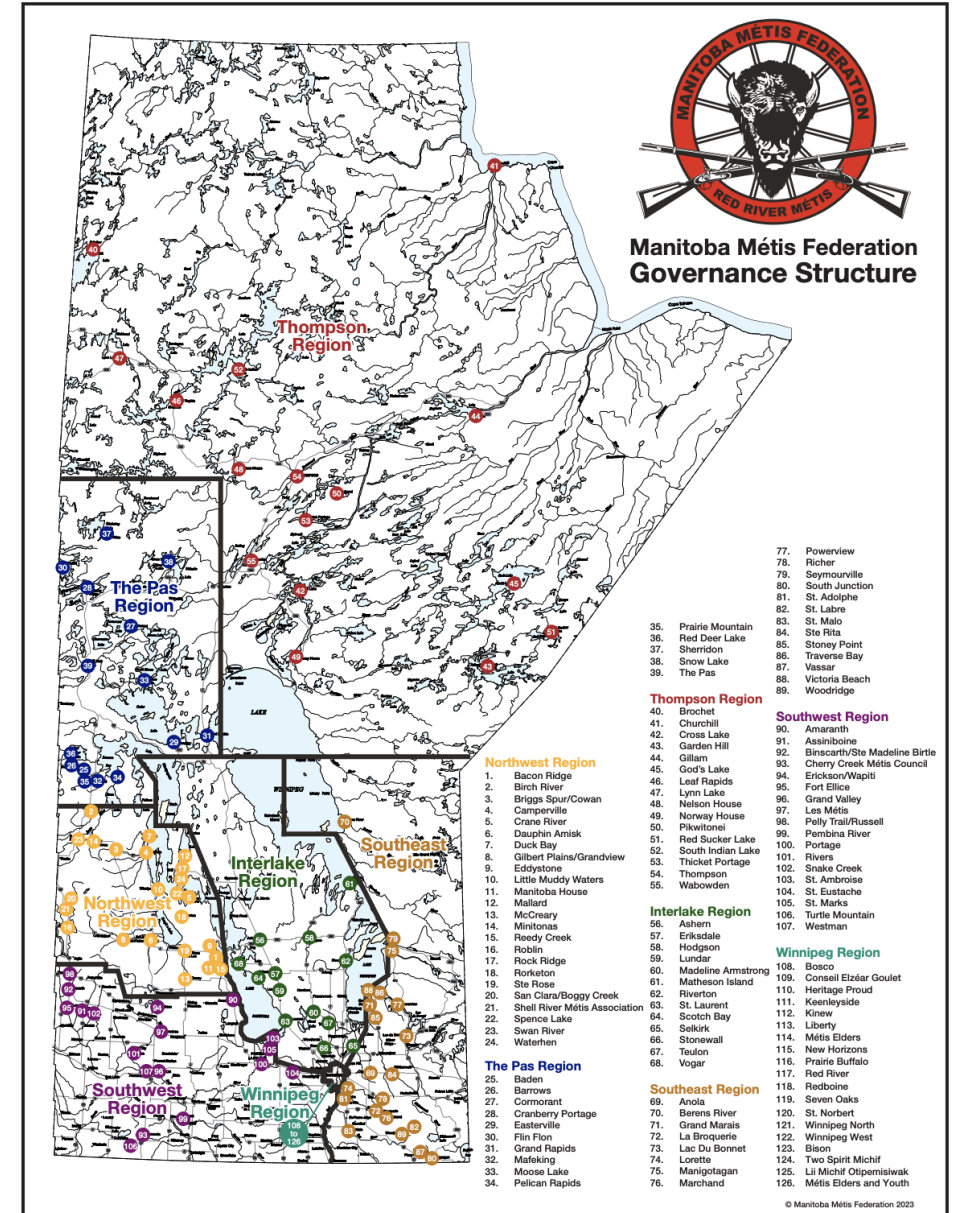
# Red River Métis Perspectives on Flooding and Drought

*Community Impacts and Climate Resilience*

*Manitoba Métis Federation*

# Red River Métis Relationship with Water Systems

- Red River Métis Communities
- Métis Worldviews and Knowledge Systems
- Flooding Historically Expected and Managed
- Climate Change Increasing Unpredictability
- Traditional Adaptation Methods Becoming Less Effective



# Impacts of Flooding and Drought



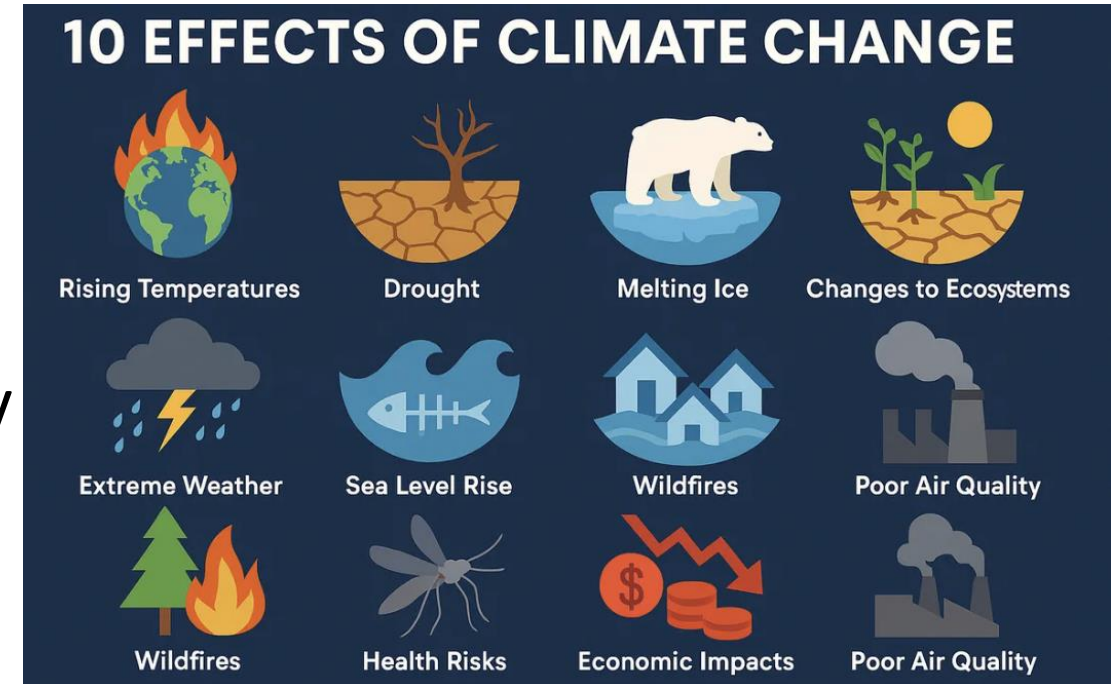
- Flooding Damages Homes, Infrastructure, and Disrupts Communities
- Drought Affects Water Supply, Ecosystems, and Traditional Harvesting
- Repeated Extremes Compound Impacts and Reduce Recovery Capacity



# Climate Change & Emerging Risks



- Increasing Variability Between Extreme Wet and Dry Conditions
- Shorter Recovery Periods Create Ongoing System Stress
- Climate Risks are Cumulative and Intensify Existing Vulnerabilities
- Traditional Practices Impacted



# Governance & Coordination Challenges



- MMF Often Excluded from Early Planning Processes
  - Creates Gaps in Preparedness and Adaptation
- Over-reliance on Response Rather than Proactive Adaptation
- Need Stronger Coordination and Recognition as Government Partners



# MMF Climate & Resilience Initiatives



**EMERGENCY PREPAREDNESS WEEK**  
— May 3 to 9, 2026 —

**Be prepared.  
Know your risks.**

Some of the emergencies that can occur in Manitoba are

- FLOOD
- WILDFIRE
- TORNADO
- HEAT WAVE  
EXTREME COLD
- SNOWSTORM

Visit [mmf.mb.ca/environment-climate-change](http://mmf.mb.ca/environment-climate-change) and stay tuned for new programs and initiatives.


The banner features a yellow and orange color scheme with a topographic map background. It includes a warning sign icon, the Manitoba Métis Federation logo, and five circular icons representing different types of emergencies: flood, wildfire, tornado, heat wave/extreme cold, and snowstorm.

- Emergency Preparedness and Proactive Adaptation Programming
- Food Security and Harvesting Supports to Maintain Resilience
- Data, Mapping, Traditional Knowledge Interviews
  - Guides Long-Term Decision Making

# Lessons & Opportunities



**We need YOUR Red River Métis Knowledge!**



- 1 Are you **Red River Métis**?
- 2 Do you have connection to the **lands or waters** across the National Homeland of the **Red River Métis**?
- 3 Do you or your family have **Red River Métis Knowledge** you are willing to share?
- 4 Are you a **Trapper, Commercial Fisher or Timber Harvester**?

*\*Honorarium & travel costs will be provided*

We want to learn about **Red River Métis history and land use** across the **National Homeland**

To schedule a Red River Métis Knowledge Interview, please contact **Brennan Richards**  
**EMAIL:** [brennan.richards@mmf.mb.ca](mailto:brennan.richards@mmf.mb.ca)  
**PHONE:** (204) 894 – 6938

- Climate Impacts are Interconnected Across Sectors
- Indigenous Knowledge is Essential for Understanding Change
- Collaboration Across Governments Improves Resilience Outcomes

# Closing Reflection: Mainstreaming Adaptation



- Adaptation Must be Embedded Across All Systems and Decisions
- Flooding and Drought are Present-day Realities
- Inclusive, Coordinated Approaches are Key to Building Resilience
- End Goal is to Build Resilience for Red River Métis and all Manitobans